

**THE**  
**WATERPROOFING-**  
**SPECIALISTS**



**KÖSTER**

# The Waterproofing Specialists



KÖSTER BAUCHEMIE AG is specialized in the development and production of waterproofing systems and concrete protection materials. Our products:

- protect new and old buildings against moisture and resulting damage
- preserve historical buildings
- ensure a healthy room climate in new living spaces



Located in Aurich in the North of Germany, KÖSTER BAUCHEMIE AG was founded in 1982 as a developer and manufacturer of waterproofing materials. Today, KÖSTER BAUCHEMIE AG is a group of 23 companies with worldwide activities.



The founder of the company and managing director, Johann J. Köster, has been in the waterproofing business for more than 45 years. His personal knowledge and experiences are the basis for our philosophy of providing high quality and long lasting waterproofing materials.

## Our waterproofing systems protect and preserve valuable buildings and structures, worldwide.

KÖSTER BAUCHEMIE AG offers a comprehensive range of materials in order to provide optimal solutions for the waterproofing of new buildings and restoration of old buildings.

Our high quality and long lasting waterproofing systems sustainably increase the life cycle of buildings. By preventing moisture damage, expensive repairs can be avoided and energy consumption can be reduced permanently.

KÖSTER concrete protection and repair systems protect concrete from corrosion by acids or other chemical attacks and help to repair already corroded concrete in the most economical and safe manner. As a responsible supplier we are committed to environmentally friendly practices. We recycle raw material and packaging where possible in order to minimize our environmental impact.



### Individual waterproofing solutions all over the world



Olympic hall, Beijing, China



Nuclear power station, Sofia, Bulgaria



Four Seasons Hotel, Mumbai, India



Museum Quarter, Vienna, Austria

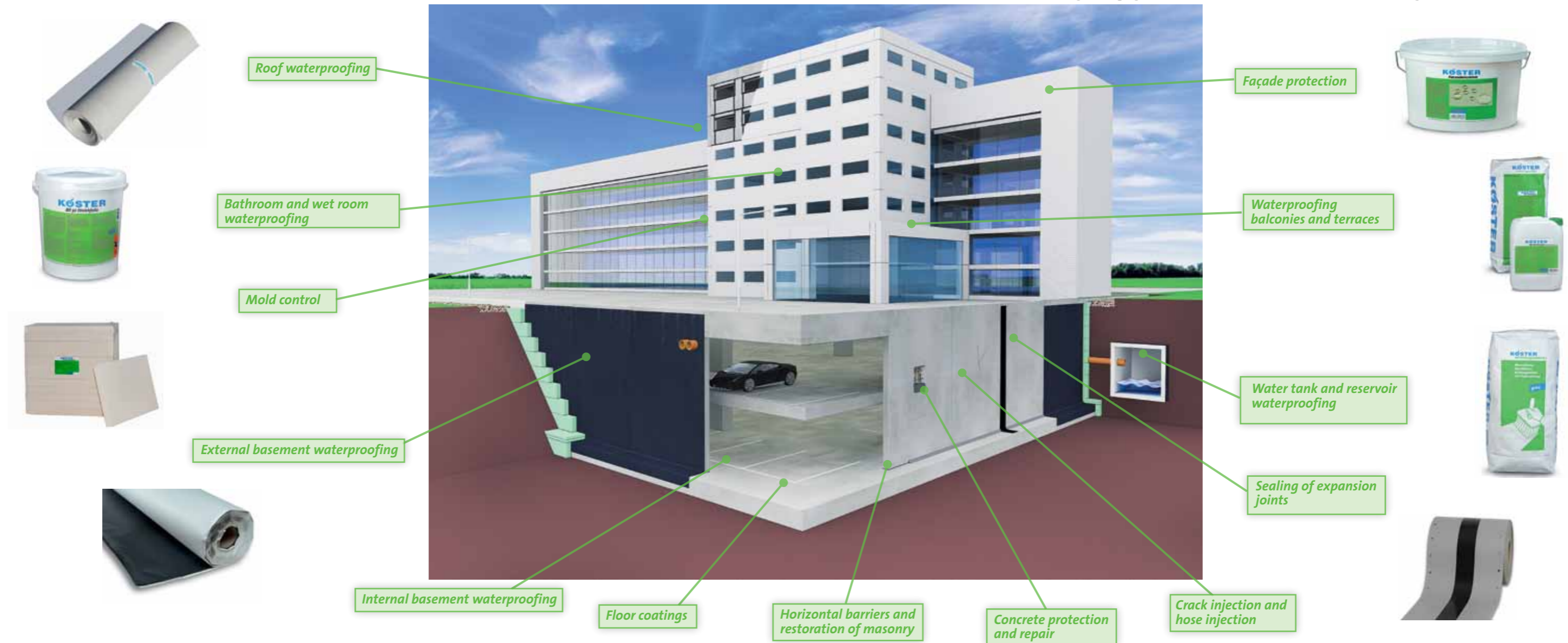


Pentagon, Washington D.C., USA

## The Waterproofing Specialists

Not always visible, but always present: because the usage of waterproofing in buildings is manifold, so are the solutions that KÖSTER offers. No matter if it is an apartment house, an industrial building, a concrete structure, or a historic building: KÖSTER BAUCHEMIE AG offers a wide range of effective products and systems which guarantee a safe waterproofing - from basement to roof.

Our core competence:  
waterproofing from basement to roof



## Individual waterproofing solutions all over the world



Sewage treatment plant, Istanbul, Turkey



Office building, Tallinn, Estonia



Water power plant, Lithuania



The MGM Grand, Las Vegas, USA



Palm Island Jumeirah, Dubai, United Arab Emirates

## Technical training

What is the best waterproofing solution for a specific situation? KÖSTER BAUCHEMIE AG attaches great importance to training in order to get the greatest value for the building owner. Contractors and other interested persons are frequently trained to ensure that they possess in-depth theoretical and practical knowledge about our products and about waterproofing technology in general. Technical training is carried out at the training center in Aurich or wherever it is needed worldwide.

*Good waterproofing solutions require analysis of the construction, a professional concept and the right products.*

Technical training at KÖSTER BAUCHEMIE AG in theory....



... and in practice.



## Technical advice

We want our partners to benefit from our technical know-how and experience. The distribution of our products via technical consultants ensures that our customers receive the support they need in order to apply our products effectively and properly. That is why our customers worldwide can rely on our advice wherever it is needed:

... personally...

...directly on the construction site...

... and on the phone.



*Individual waterproofing solutions:  
our flexibility is your advantage.*

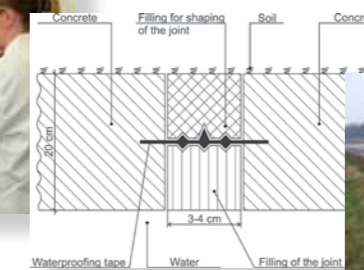
Sometimes waterproofing problems cannot be solved by existing products or methods but need an individual solution. Together with our customers we analyze each situation and then develop a customized solution for their specific problem.



The problem...



... the analysis...



... the solution...



... the execution.

## Individual waterproofing solutions all over the world



Historic town-hall, Potsdam, Germany



Drinking water tank, Tarnów, Poland



Ladawan Palace, Bangkok, Thailand



Cooling towers of a power plant, China



Parliament, The Hague, Netherlands

## Our approach to quality



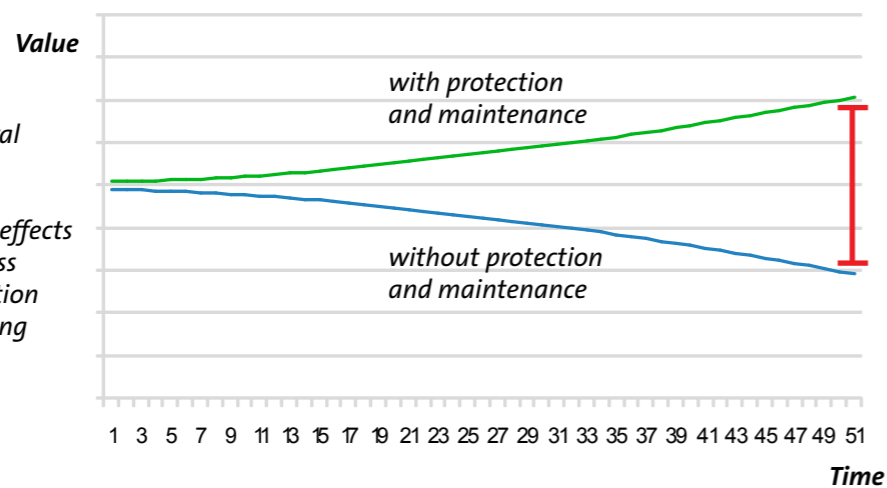
Using high quality materials for the waterproofing of a building will protect the owner from damages and thereby save him immense nuisance and costs. That is why it has always been our policy to offer materials of the highest quality, durability and performance. KÖSTER has a firm belief that one should never compromise on quality. We aim to develop a strong and lasting relationship with our customers. This commitment to quality does not only apply to our materials but also to our service. This means that all levels of the organization, i.e. research and development, purchasing, administration, production, logistics and sales are all committed to provide quality service to the customer.

KÖSTER is proud to produce its waterproofing and concrete repair systems itself according to German quality standards and using the best raw materials available. The in-house production and R&D guarantees full control of the quality and technical properties of the product. It also gives us the flexibility to adjust the products to specific customer needs. Close communication with our customers leads to new ideas for new solutions and eventually to new products. Our production is certified according to ISO 9001. Our products are frequently tested by independent test institutes. KÖSTER BAUCHEMIE is committed to preserve and protect the environment by combining the most modern raw materials and production technologies with state-of-the-art research and development. This means that most of the materials are water-based or solvent-free and formulated to minimize the impact on nature. These characteristics are naturally in line with KÖSTER BAUCHEMIE's customer commitment where not only the environment is considered but also the health of the people who live and work with the materials.



## Waterproofing is the most cost effective way to maintain the value of a building

Why quality? As a general rule, more than 80% of damages to apartment buildings are due to the effects of water. Typically, for less than 5% of the construction cost quality waterproofing can be achieved.



## Range of products

On the following pages, you will find an overview of the KÖSTER product range. Products have been itemized by field

of application and include a short product description.

**W Waterproofing (page 10-11)**  
Basement, tank, and area waterproofing

**M Masonry (page 12)**  
Restoration of masonry, anti mold systems

**IN Injection (page 13)**  
Crack injection and crack repair systems

**C Concrete (page 14)**  
Concrete protection and concrete repair, concrete and mortar additives

**SL Self leveling (page 14)**  
Self leveling mineral underlayments, floor patching materials, corresponding primers

**CT Coatings (page 15)**  
Floor and corrosion protection coatings, moisture control systems

**J Joints (page 16)**  
Joint sealants, joint tapes

**P Paints (page 16)**  
Façade protection and paints

**B Bathroom (page 17)**  
Wet room waterproofing system

**R Roof (page 17-18)**  
Roof waterproofing, roofing membranes





Primers / surface preparation	W 100 005	KÖSTER KSK Primer SP	Strongly adhesive primer for the application of KÖSTER KSK Membranes in low temperatures	
	W 110 010	KÖSTER Bitumen Primer	High quality, cold applied bitumen primer with bonding additive. Suitable on old bitumen.	
	M 111	KÖSTER Polysil TG 500	Impregnation and priming. Hardens mineral substrates and immobilizes salts. Enhances the adhesion of waterproofing slurries and restoration plasters.	
	W 120 015	KÖSTER KSK Primer BL	Solvent-free, bitumen based, primer for KÖSTER KSK Membranes	
	W 190 030	KÖSTER Bitumen Emulsion	Primer and surface sealant with excellent adhesion	
Main products	W 210 020	KÖSTER 21	Multi-purpose, crack bridging, liquid applied waterproofing. White, UV stable and heat reflecting. Very good adhesion to dry and moist substrates. Applicable to various substrates.	
	W 211	KÖSTER KD 1 Base	Fast-setting, mineral waterproofing slurry with high resistance to aggressive ground moisture and pressurized water. Part 1 of KÖSTER KD System.	
	W 219 001	KÖSTER KD System	Three product system for super fast negative side waterproofing under difficult conditions (running water). System pack for 0.5 m <sup>2</sup> : 1.0 kg KÖSTER KD 1 Base, 1.0 kg KÖSTER KD 2 Blitz Powder, 0.5 kg KÖSTER KD 3 Sealer.	
	W 220 023	KÖSTER CFR 1	Highly elastic hot-melt bitumen-rubber waterproofing against pressurized water up to 50 bar. Elasticity > 2000%.	
	W 221 025	KÖSTER NB 1 Grey	Crystallizing waterproofing (grey) against pressurized water (> 13 bar), with self healing effect, for positive and negative side waterproofing	
	W 222 025	KÖSTER NB 2 White	Crystallizing waterproofing (white) against pressurized water (> 13 bar), with self healing effect, for positive and negative side waterproofing	
	W 223 025	KÖSTER NB 1 Fast	Fast setting crystallizing waterproofing against pressurized water, with self healing effect, for positive and negative side waterproofing	
	W 225 025	KÖSTER Restoration Slurry	Waterproofing slurry, resistant to sulphates and hydrostatic pressure	
	W 233 033	KÖSTER NB Elastic Grey	Abrasion resistant, 2-component, 2 mm crack bridging cementitious waterproofing, resistant to hydrostatic pressure, grey	
	W 234 033	KÖSTER NB Elastic White	2-component, 2 mm crack bridging abrasion resistant cementitious waterproofing, resistant to hydrostatic pressure, white	
	W 236 020	KÖSTER NB 4000	Bitumen free thick film sealant, crack bridging, for below grade waterproofing in adverse weather conditions	
	W 245 001	KÖSTER Anti Soot	Deeply penetrating primer to prevent and fight odors and stains from sooted chimneys	
	W 245	KÖSTER KBE Liquid Film	High quality, highly flexible, cold applied solvent free waterproofing. Elasticity > 900%.	
	W 250 028	KÖSTER Bikuthan 2C	Crack-bridging, 2-component, polystyrene filled polymer modified bituminous thick coating (PMB according to EN 15814) for below grade waterproofing. Resistant to hydrostatic pressure.	
	W 251 030	KÖSTER Bikuthan 1C	Sprayable, crack bridging, 1-component, polystyrene filled polymer modified bituminous thick coating (PMB according to EN 15814) for below grade waterproofing. Resistant to hydrostatic pressure.	
	W 252 032	KÖSTER Deuxan 2C	Fiber reinforced, crack-bridging, 2-component polymer modified bitumen thick coating (PMB according to EN 15814) for below grade waterproofing. Resistant to hydrostatic pressure.	
	W 256 032	KÖSTER Deuxan Professional	Sprayable, fiber reinforced, crack-bridging, 2-component polymer modified bitumen thick coating (PMB according to EN 15814) for below grade waterproofing. Resistant to hydrostatic pressure.	
	Finish / sealer	W 313	KÖSTER KD 3 Sealer	Low viscosity, pore filling, deeply penetrating silicifying agent. Part 3 of KÖSTER KD System.
		W 330 005	KÖSTER BE Rainproof	Immediate rain protection for bitumen-emulsion based waterproofing materials

Reinforcement	W 411	KÖSTER Glass Fiber Mesh	Fabric for reinforcing bitumen thick film sealants (0.33 m x 100 m)
	W 450 100	KÖSTER Flex Fabric	Elastic polyester reinforcement mesh for thin-layer waterproofings e. g. KÖSTER 21, KÖSTER NB Elastic (1.0 m x 50 m)
Mortars / patching materials	W 501 005	KÖSTER BS 1 Bitumen Paste	Fibrated bitumen filling compound for repair and waterproofing work
	W 512	KÖSTER KD 2 Blitz	Stops active leaks within seconds. Highly reactive powder with extremely short setting time. Part 2 of KÖSTER KD System.
	W 530 025	KÖSTER Repair Mortar	Watertight fillet, repair, and finish mortar with special bonding additives
	W 532 025	KÖSTER Repair Mortar Plus	Slightly expanding, watertight, fillet, repair, and finish mortar with special bonding additives
	W 534 025	KÖSTER WP Mortar	Drinking water certified, fast setting putty repair mortar for joint and area reprofiling. Suitable against pressurized water.
	W 540 015	KÖSTER Waterstop	Expanding, fast setting waterplug against leakages
	Additives	W 710	KÖSTER SB Bonding Emulsion
W 721 008		KÖSTER NB 1 Flex	Ready-mixed additive for NB sealing slurries. Provides a plastifying effect, improves adhesion to the substrate and prevents from premature drying of the slurry.
Membranes	W 810 010 AL	KÖSTER Fix-Tape 10 Alu	Cold applied, self-adhesive waterproofing tape with top-side aluminium foil (1.0 mm x 100 mm x 10 m)
	W 810 025	KÖSTER Fix-Tape 10 SY	Cold applied, self-adhesive waterproofing tape with top-side PE foil (1.0 mm x 250 mm x 10 m)
	W 815 004 DS	KÖSTER Fix-Tape 15 DS	Cold applied, double sided self adhesive waterproofing tape (1.5 mm x 40 mm x 20 m)
	W 815 020	KÖSTER Fix-Tape 15 SY	Cold applied, self-adhesive waterproofing tape with top-side PE foil (1.5 mm x 200 mm x 20 m)
	W 815 096 AL	KÖSTER KSK Alu 15	Cold applied, self-adhesive waterproofing membrane with top-side aluminium foil (1.5 mm x 0.96 m x 20 m)
	W 815 105	KÖSTER KSK SY 15	Cold applied, self-adhesive waterproofing membrane for terraces, balconies, wet rooms, and basements (1.5 mm x 1,05 m x 20 m)
	W 815 105 DS	KÖSTER KSK DS 15	Double sided, cold applied waterproofing membrane (1.5 mm x 1.05 m x 20 m)
	W 815 015 F	KÖSTER Butyl Fix-Tape Fleece	Sealing tape to be used for fixation of waterproofing membranes, can be plastered over (1.5 mm x 15 cm x 10 m)
Accessories	W 901 030	KÖSTER SD Protection and Drainage Sheet 3 - 400	3 in 1: backfill protection of the waterproofing, gliding layer, and drainage (2.0 m x 15 m)
	W 911 001	KÖSTER Rubber Hand Roller	For the secure application of KÖSTER KSK Membranes
	W 912 001	KÖSTER Brush for Liquids	Special brush for liquid materials (e. g. KÖSTER Dachflex, KÖSTER KD 3)
	W 913 001	KÖSTER Brush for Slurries	Special brush for the application of waterproofing slurries
	W 978 001	KÖSTER Peristaltic Pump	Electrical pump (230 V or 110 V) for the spray application of water based, bituminous and mineral materials
	W 979 001	KÖSTER Service Box	Set of spare parts for the KÖSTER Peristaltic Pump



## M - Masonry

Primers / surface preparation	M 111	KÖSTER Polysil TG 500	Impregnation and priming. Hardens mineral substrates and immobilizes salts. Enhances the adhesion of waterproofing slurries and restoration plasters.	
	M 150 024	KÖSTER Mautrol Borehole Suspension	Silicifying mortar suspension for filling voids and cracks. Used before the sealing against rising damp via borehole injection.	
	M 152 002	KÖSTER AMS 1 Primer	Primer for KÖSTER Anti-Mold-System	
	M 170 020	KÖSTER Hydrosilicate Adhesive SK	For the gluing of KÖSTER Hydrosilicate Boards as well as spackle on the installed boards	
Main products	M 241	KÖSTER Mautrol Liquid Sealant	Silicifying concentrate for consolidating and strengthening the substrate as well as for sealing against rising damp	
	M 241 550	KÖSTER Mautrol Liquid Sealant Cartridge	Silicifying concentrate in cartridges for sealing against rising damp (borehole injection, suction angle system). Consolidates and strengthens the substrate.	
	M 252 005	KÖSTER AMS 2 Liquid Film	Reduces vapor transmission. Part 2 of the KÖSTER AMS System.	
	M 261	KÖSTER Mautrol 2C	Fast setting waterproofing against rising damp with pressurized injection. Suitable for very moist conditions.	
	M 262 020	KÖSTER Mautrol Flex 2C	For waterproofing against rising damp with pressurized injection in very moist construction members. Flexible and water dilutable depending on the moisture content of the wall.	
	M 276	KÖSTER Crisin 76	Waterproofing against rising damp even with high moisture and salt contents in the masonry. In cannisters or drums for refilling of cartridges.	
	M 276 450	KÖSTER Crisin 76 Cartridge	Low viscosity resin for pressureless injection against rising damp. Even in difficult cases and at high moisture and salt contents.	
	Finish / sealer	M 369 025	KÖSTER Restoration Plaster Coat	Fine-grained plaster coat for smoothening KÖSTER Restoration Plasters surfaces
		M 652 015	KÖSTER AMS 3 Special Plaster	Condensate-reducing special plaster. Part 3 of the KÖSTER AMS System.
	Renders, plasters, anti mold boards	M 661 025	KÖSTER Restoration Plaster 1 Grey	Grey plaster for restoration of moisture and salt burdened masonry. Open to water vapor diffusion, water repellent, with high compressive strength, resistant to salts.
M 662 025		KÖSTER Restoration Plaster 2 White	White plaster for restoration of moisture and salt burdened masonry. Open to water vapor diffusion, water repellent, with high compressive strength, resistant to salts.	
M 663 025		KÖSTER Restoration Plaster 2 "Fast"	White, fast-curing restoration plaster for the quick restoration of smaller areas	
M 664 025		KÖSTER Restoration Plaster 2 "Light"	White restoration plaster, specially light	
M 665 025		KÖSTER Restoration Plaster 2 "Fast and Light"	White, fast-curing restoration plaster, specially light	
M 670 001		KÖSTER Hydrosilicate Tapered Board	Tapered board for corners and junctions (500 x 380 mm, tapers from 60 mm to 20 mm)	
M 670 008		KÖSTER Hydrosilicate Board 50 mm	Hydrophobic, fiber free, breathable, mineral based boards for the renovation of mold infested mineral based building materials (580 x 380 x 50 mm)	
M 670 016		KÖSTER Hydrosilicate Board 25 mm	Hydrophobic, fiber free, breathable, mineral based boards for the renovation of mold infested mineral based building materials (580 x 380 x 25 mm)	
M 672 025		KÖSTER Restoration Plaster "E" Grey	Economical, grey, fast-curing restoration plaster	
Additives		W 710	KÖSTER SB Bonding Emulsion	Provides a plastifying effect, increases the flexibility, acts as a curing agent, and reduces the water absorption of mineral systems (e.g. waterproofing slurries, mortars)
Accessories	M 931 001	KÖSTER Installation Tool for Capillary Rods	Assembly tool for an easy and fast installation of KÖSTER Capillary Rods	
	M 963 001	KÖSTER Capillary Rods	Ensures even distribution of the horizontal barriers KÖSTER Crisin 76 and KÖSTER Mautrol even in masonry with cracks and voids (45 cm)	
	M 999 001	KÖSTER Protimeter	For evaluating surface moisture of mineral substrates	



## IN - Injection

Substrate preparation	IN 110	KÖSTER IN 1	Injection foam: stops running water in cracks	
	Main products	IN 201	KÖSTER 2 IN 1	Two injection products in one: stops flowing water in cracks, fills and closes dry cracks permanently
IN 220		KÖSTER IN 2	Solid elastic injection resin: seals and closes dry cracks and joints after the injection of KÖSTER IN 1	
IN 230		KÖSTER IN 3	Injection resin for restoring structural strength	
IN 231 006		KÖSTER KB-Pox IN	Epoxy injection resin for restoring structural strength, even in moist and wet cracks	
IN 240		KÖSTER IN 4	Low viscosity injection resin that closes cracks elastically. Also for microcracks.	
IN 250		KÖSTER IN 5	Low viscosity injection resin that closes cracks elastically. Specially designed for hose injection.	
IN 270		KÖSTER IN 7	Injection foam for one-step waterproofing of water bearing cracks	
IN 285		KÖSTER PUR Gel	For curtain injection, area injection and for waterproofing of (water bearing) moving joints. Hydro-gel. Reacts with water and forms a waterproofing layer.	
IN 295 024		KÖSTER Micro Grout 1C	Injection grout for closing cracks and voids where structural strength is required	
Accessories		IN 903 001	KÖSTER Impact Packer 12	Injection packer with non-return valve (12 mm x 70 mm)
		IN 904 001	KÖSTER Impact Packer 18 Plus	Injection packer with non-return valve for injection of gel (18 mm x 110 mm)
		IN 905 001	KÖSTER Impact Packer 18	Injection packer with cap for injecting cement grouts (without non-return valve) 18 x 110 mm
		IN 912 001	KÖSTER Superpacker 10 x 85 mm	Injection packer, conehead fitting, galvanised (10 x 85 mm)
		IN 913 001	KÖSTER Superpacker 10 x 115 mm	Injection packer, conehead fitting, galvanised (10 x 115 mm)
		IN 914 001	KÖSTER Superpacker 13 x 85 mm	Injection packer, conehead fitting, galvanised (13 x 85 mm)
		IN 915 001	KÖSTER Superpacker 13 x 115 mm	Injection packer, conehead fitting, galvanised (13 x 115 mm)
	IN 918 001	KÖSTER One-day-site Packer 13 x 90 mm	Injection packer with non-return valve, conehead fitting, galvanised (13 x 90 mm)	
	IN 919 001	KÖSTER One-day-site Packer 13 x 120 mm	Injection packer with non-return valve, conehead fitting, galvanised (13 x 120 mm)	
	IN 923 001	KÖSTER Injection Lance 18 x 300 mm	With flat head fitting for gel injections (18 mm x 300 mm)	
	IN 924 001	KÖSTER Injection Lance 18 x 550 mm	With flat head fitting for gel injections (18 mm x 550 mm)	
	IN 925 001	KÖSTER Distributor Lance 18 x 300 mm	Curtain injection lance with flat head fitting with guide cap for sideways distribution of injection material (18 mm x 300 mm)	
IN 926 001	KÖSTER Distributor Lance 18 x 580 mm	Curtain injection lance with flat head fitting with guide cap for sideways distribution of injection material (18 mm x 580 mm)		
IN 928 001	KÖSTER Gel Pump	2-component pump for the injection of KÖSTER PUR Gel with a continuously adjustable mixing ratio		
IN 929 001	KÖSTER 1C Injection Pump	1-component injection pump (230 oder 110 Volt) for the pressure injection of cracks and filling voids		
IN 952 001	KÖSTER Loka Hand Pump	Hand pump for KÖSTER Mautrol Borehole Suspension and KÖSTER Micro Grout		
IN 953 002	KÖSTER Hand Pump with manometer	Manual pump for small injection jobs or areas which are difficult to access		
IN 958 001	KÖSTER Foot Pump	1-component pump for injecting cracks and voids. Suitable for injection resins and horizontal barriers.		
IN 988 001	KÖSTER Resin Mixer	Special mixer for polyurethane and epoxy resins		



## C - Concrete

Surface preparation	C 155 001	KÖSTER Z1	Grey, special slurry for the mineral corrosion protection of steel reinforcement. Application of the first layer on steel, under Z2.
Main products	C 255 001	KÖSTER Z2	Red, special slurry for the mineral corrosion protection of steel reinforcement. Application of the second layer on Z1.
	C 280 030	KÖSTER PSM	Special coating, highly resistant against various acids and other chemicals, from pH 0 to 8
Mortars / patching materials	C 500	KÖSTER Betomor Multi A	Concrete repair: unites corrosion protection, coarse filler, fine filler and bonding bridge in one product
	C 510 025	KÖSTER C-Coat	Levelling mortar for smoothing concrete surfaces
	C 511 015	KÖSTER KB-Fix 1	Pressure resistant rapid curing mortar for quick repairs (approx. 1 minute working time)
	C 515 015	KÖSTER KB-Fix 5	Pressure resistant rapid curing mortar for quick repairs (approx. 5 minutes working time)
	C 530 018	KÖSTER Betomor Light 88	Overhead concrete repair: light weight mortar for repair and reprofiling work
	C 535 025	KÖSTER Repair Mortar NC	Fiber reinforced repair mortar with high chemical and mechanical resistance
	C 590	KÖSTER Sewer and Shaft Mortar	Water tight, fiber reinforced, fast setting restoration mortar specially for sewers and shafts
Additives	C 720 020	KÖSTER Fast Setting Cement	Accelerator for mortars
	C 731 000	KÖSTER BDM	Integral waterproofing of concrete elements. Chloride free, crystallizing, blocks capillaries, and provides an additional water-repelling effect.
	C 790 010	KÖSTER Mortar Sealing Liquid	Liquid mortar sealing agent for cement and lime / cement plasters with plasticizing effect



## SL - Self leveling

Primers / surface preparation	SL 131 009	KÖSTER VAP I 06	For priming cured non-breathable coatings (e.g. KÖSTER VAP I 2000) for the subsequent installation of cementitious self-leveling underlayments
	SL 189 005	KÖSTER SL Primer	Primer on mineral substrates for KÖSTER underlayments (e. g. KÖSTER SL Premium)
Main products	SL 251 025	KÖSTER VGM Fast	Suspension with high final compressive and tensile strength for filling voids and stabilization of structures. Trafficable after 3 hours.
	SL 280 025	KÖSTER SL Premium	High quality, fast setting underlayment. Hardens tension free and provides a smooth, level surface ready to receive subsequent flooring systems.
	SL 281 025	KÖSTER SL	Fast setting underlayment. Hardens tension free and provides a smooth, level surface ready to receive subsequent flooring systems.
	SL 284 025	KÖSTER SL Flex	Special underlayment for the restoration of wooden floors, tiles, asphalt, etc.
	SL 285 025	KÖSTER SL Strong	High abrasion resistant, freeze and thaw resistant underlayment for interior and exterior use



## CT - Coatings

Primers / surface preparation	CT 160	KÖSTER LF-BM	Primer for floor coatings. Binding agent: coating mixed with silica sand to form a high mechanical resistance. Solvent free.	
	CT 165 025	KÖSTER Construction Resin	Universal epoxy: usage as binding agent or floor primer. Can be filled with kiln dried quartz sand. Excellent bonding to mineral substrates. Solvent free.	
	CT 175 008	KÖSTER ESD 175	Primer for KÖSTER ESD 275	
	CT 181 010	KÖSTER CMC Primer	Primer for KÖSTER CMC	
Main products	CT 210 008	KÖSTER EM-VS	Sealing of wall and floor surfaces against light to medium stresses. Color: similar to RAL 7032 (pebble grey).	
	CT 230	KÖSTER VAP I 2000	Concrete moisture control system for reduction of water vapor under floor systems (hardens in approx. 12 hours)	
	CT 233	KÖSTER VAP I 2000 FS	Fast curing, solvent-free concrete moisture control system for the reduction of water vapor under floor systems (hardens in approx. 4-5 hours)	
	CT 234	KÖSTER VAP I 2000 UFS	Ultra fast curing, solvent-free concrete moisture control system for the reduction of water vapor under floor systems (hardens in approx. 2-3 hours)	
	CT 271	KÖSTER LF-VL	Self-leveling, solvent free, pigmented coating for industrial floors. High abrasion resistance. Color: similar to RAL 7032 (pebble grey).	
	CT 275 026	KÖSTER ESD 275	Electro static discharging, self leveling floor coating. Solvent free.	
	CT 276 010	KÖSTER PS Flex	Flexible and abrasion resistant coating for floors. Suitable for the protection against diluted acids, alkalis and salt solutions.	
	CT 280 005	KÖSTER CMC	Highly mechanically and chemically resistant coating (pH 1 to pH 13) with good adhesion to all mineral substrates and stainless steel	
	CT 283 006	KÖSTER Corrosion Protection	Solvent free, epoxy based protective coating with excellent adhesion to steel. With high mechanical and chemical resistance.	
	CT 284	KÖSTER Bridge Coat	Epoxy sealant for bridge decks and other civil engineering structures. Asphalt can be installed directly onto the fully cured coating. Resistant to high mechanical stresses.	
	CT 286 006	KÖSTER VE	Corrosion protection mortar with very good adhesion to all mineral substrates and to stainless steel. The material is suitable for heavy duty corrosion protection: e. g. agricultural concrete elements, waste treatment plants, and chimneys.	
	Finish / sealer	CT 320	KÖSTER TS transparent	Surface sealant for coatings (KÖSTER EM-VS, KÖSTER LF-VL, KÖSTER BTG System) or for concrete. High chemical, mechanical, UV resistance. Trafficable after 24 hours.
	Broadcast	CT 429	KÖSTER Color-Chips	For broadcasting into suitable floor coatings, white/light grey, 2 mm, other colors available on request.
	Accessories	CT 914 001	KÖSTER Spiked Roller	For de-airing of floor coatings. Width: 80 cm.
CT 915 001		KÖSTER Screed Scraper	For the distribution of e. g. KÖSTER underlayments, height adjustable from 0-30 mm	
CT 916 001		KÖSTER Resin Roller 250 mm	For the application of resins. 250 mm wide.	
	CT 918 001	KÖSTER Squeegee 580 mm	Notched squeegee for spreading resins. 580 mm wide.	





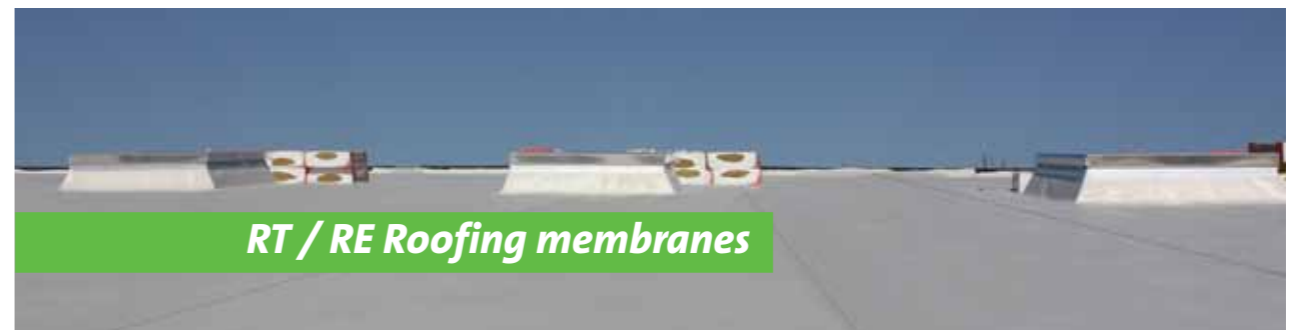
## J - Joints

Primers / surface preparation	J 120 005	KÖSTER KB-Pox Adhesive	High performance adhesive for KÖSTER Joint Tape with excellent adhesion to concrete, mortar, metal, wood, etc.
	J 139 200	KÖSTER FS Primer 2C	Primer for KÖSTER Joint Sealant FS
Main products	J 231 004	KÖSTER Joint Sealant FS-V	Elastic joint sealant stable for vertical (V) waterproofing
	J 232 004	KÖSTER Joint Sealant FS-H	Elastic joint sealant, self leveling for horizontal (H) waterproofing
	J 250	KÖSTER KB-Flex 200	Waterproofing for pipe and cable penetrations even against pressurized water. 1-component, permanently plastic, can be directly applied from the cartridge.
Membranes	J 820 020	KÖSTER Joint Tape 20	Waterproofing of wide moving joints and cracks. Withstands extreme movements (width: 20 cm).
	J 830 020	KÖSTER Joint Tape 30	Waterproofing of wide moving joints and cracks. Withstands extreme movements (width: 30 cm).
	J 870 010	KÖSTER Special Joint Tape	Cold self adhesive, highly tear-resistant joint tape for connecting waterproofing areas (t: 2,0 mm, w: 300 mm, l: 10 m)
Accessories	J 981 001	KÖSTER Special Caulking Gun	For the application of KÖSTER KB-Flex 200 in 530 ml cartridges. Includes connecting hose and nozzle.
	J 989 001	KÖSTER Caulking Gun	For 310 ml cartridges



## P - Paints

Surface preparation	P 110 005	KÖSTER Façade Cleaning Cream	Removes scaling and efflorescence of mineral substrates
Main products	P 200	KÖSTER Façade Cream	Water repelling hydrophobizing impregnation for facades and other mineral surfaces. Liquid (cream) applied, solvent-free.
	P 240 010	KÖSTER Siloxan	Water repelling hydrophobizing impregnation for facades, spray applied
	P 260 010	KÖSTER Silicone Paint White	Rain and dirt repelling paint with water repelling effect, open to vapour diffusion
	P 280	KÖSTER MF 1	Mineral paint for inside and outside use. Effective against algae, mould and fungi.



## RT / RE Roofing membranes

KÖSTER Roofing Membranes are suitable for a variety of installation methods including: mechanical fastening, loose laying with ballast, and full surface adhesion on flat and green roofs. They stand out due to their durability and sustainability as well as through their excellent application and superior mechanical properties. KÖSTER manufactures thermoplastic Polyolefin (TPO) membranes and Ethylene-Copolymer-Bitumen (ECB) membranes. The standard color of the KÖSTER TPO membranes is light grey. The standard color of the KÖSTER ECB membranes is black.

- m: for mechanical fastening
- l: for loose laying with ballast
- b: for bonded application
- u: unreinforced, homogenous membrane for creation of drainage and ventilation flanges and corner reinforcements
- 2S: welding edges on two sides

Article no.	Roofing membrane	Thickness	Width	Usage
RT 816 210	KÖSTER TPO 1.6 - 2.10 m	1,6 mm	2,10 m	m,l
RT 816 150	KÖSTER TPO 1.6 - 1.50 m	1,6 mm	1,50 m	m,l
RT 816 105	KÖSTER TPO 1.6 - 1.05 m	1,6 mm	1,05 m	m,l
RT 816 075	KÖSTER TPO 1.6 - 0.75 m	1,6 mm	0,75 m	m,l
RT 816 052	KÖSTER TPO 1.6 - 0.525 m	1,6 mm	0,525 m	m,l
RT 816 035	KÖSTER TPO 1.6 - 0.35 m	1,6 mm	0,35 m	m,l
RT 816 025	KÖSTER TPO 1.6 - 0.25 m	1,6 mm	0,25 m	m,l
RT 818 210	KÖSTER TPO 1.8 - 2.10 m	1,8 mm	2,10 m	m,l
RT 818 150	KÖSTER TPO 1.8 - 1.50 m	1,8 mm	1,50 m	m,l
RT 818 105	KÖSTER TPO 1.8 - 1.05 m	1,8 mm	1,05 m	m,l
RT 818 075	KÖSTER TPO 1.8 - 0.75 m	1,8 mm	0,75 m	m,l
RT 818 052	KÖSTER TPO 1.8 - 0.525 m	1,8 mm	0,525 m	m,l
RT 818 035	KÖSTER TPO 1.8 - 0.35 m	1,8 mm	0,35 m	m,l
RT 818 025	KÖSTER TPO 1.8 - 0.25 m	1,8 mm	0,25 m	m,l
RT 820 210	KÖSTER TPO 2.0 - 2.10 m	2,0 mm	2,10 m	m,l
RT 820 150	KÖSTER TPO 2.0 - 1.50 m	2,0 mm	1,50 m	m,l
RT 820 105	KÖSTER TPO 2.0 - 1.05 m	2,0 mm	1,05 m	m,l
RT 820 075	KÖSTER TPO 2.0 - 0.75 m	2,0 mm	0,75 m	m,l
RT 820 052	KÖSTER TPO 2.0 - 0.525 m	2,0 mm	0,525 m	m,l
RT 820 035	KÖSTER TPO 2.0 - 0.35 m	2,0 mm	0,35 m	m,l
RT 820 025	KÖSTER TPO 2.0 - 0.25 m	2,0 mm	0,25 m	m,l



## B - Bathroom

Primer	B 190 005	KÖSTER BD 50 Primer	Creates a bonding bridge to absorbent substrates
Main products	B 290 010	KÖSTER BD 50	Wet room waterproofing under tiles: highly elastic, watertight, acrylic based. For walls and floors.
Mortars / patching materials	B 530 033	KÖSTER Adhesive Mortar	Frost resistant adhesive mortar for tiling and natural flagstone. Suitable for interior and exterior use.
	B 540 025	KÖSTER BD Flexible Tile Adhesive	1-component, flexible adhesive for all mineral building materials
Accessories	B 931	KÖSTER BD Flex Tape K 120	Secure connection of area waterproofing in joints or wall/floor connections (0.6 mm x 120 mm x 10 m)
	B 932 001	KÖSTER BD Inside Corner	Waterproofing of inside corners in wet rooms (Leg length: 60 mm; h: 0.6 mm)
	B 933 001	KÖSTER BD Outside Corner	Waterproofing of outside corners in wet rooms (Leg length: 60 mm; h: 0.6 mm)
	B 934 001	KÖSTER BD Wall Sleeve	Waterproofing of pipe penetrations in wet rooms (120 x 120 mm)
	B 935 001	KÖSTER BD Floor Sleeve	Waterproofing of floor drains in wet rooms (350 x 350 mm)



## RT / RE - Roofing membranes

	Article no.	Roofing membrane	Thickness	Width	Usage
TPO with additional polyester fleece backing	RT 816 150 F	KÖSTER TPO 1.6 F - 1.50 m	1,6 mm	1,50 m	m,l,b
	RT 816 105 F	KÖSTER TPO 1.6 F - 1.05 m	1,6 mm	1,05 m	m,l,b
	RT 816 105 F2S	KÖSTER TPO 1.6 F 2S - 1.05 m	1,6 mm	1,05 m	m,l,b, 2 S
	RT 816 052 F	KÖSTER TPO 1.6 F - 0.525 m	1,6 mm	0,525 m	m,l, b
	RT 818 150 F	KÖSTER TPO 1.8 F - 1.50 m	1,8 mm	1,50 m	m,l,b
	RT 818 105 F	KÖSTER TPO 1.8 F - 1.05 m	1,8 mm	1,05 m	m,l, b
	RT 818 105 F2S	KÖSTER TPO 1.8 F 2S - 1.05 m	1,8 mm	1,05 m	m,l, b, 2 S
	RT 818 052 F	KÖSTER TPO 1.8 F - 0.525 m	1,8 mm	0,525 m	m,l, b
	RT 820 210 F	KÖSTER TPO 2.0 F - 2.10 m	2,0 mm	2,10 m	m,l, b
	RT 820 150 F	KÖSTER TPO 2.0 F - 1.50 m	2,0 mm	1,50 m	m,l, b
	RT 820 105 F	KÖSTER TPO 2.0 F - 1.05 m	2,0 mm	1,05 m	m,l, b
	RT 820 105 F2S	KÖSTER TPO 2.0 F 2S - 1.05 m	2,0 mm	1,05 m	m,l, b, 2 S
RT 820 052 F	KÖSTER TPO 2.0 F - 0.525 m	2,0 mm	0,525 m	m, l	
Unreinforced, homogenous TPO	RT 820 052 U	KÖSTER TPO 2.0 U - 0.525 m	2,0 mm	0,525 m	u
ECB with glass fibre mesh reinforcement	RE 820 210	KÖSTER ECB 2.0 - 2.10 m	2,0 mm	2,10 m	m,l
	RE 820 150	KÖSTER ECB 2.0 - 1.50 m	2,0 mm	1,50 m	m,l
	RE 820 105	KÖSTER ECB 2.0 - 1.05 m	2,0 mm	1,05 m	m,l
	RE 820 075	KÖSTER ECB 2.0 - 0.75 m	2,0 mm	0,75 m	m,l
	RE 820 052	KÖSTER ECB 2.0 - 0.525 m	2,0 mm	0,525 m	m,l
	RE 820 035	KÖSTER ECB 2.0 - 0.35 m	2,0 mm	0,35 m	m,l
	RE 820 025	KÖSTER ECB 2.0 - 0.25 m	2,0 mm	0,25 m	m,l
	RE 820 025	KÖSTER ECB 2.0 - 0.25 m	2,0 mm	0,25 m	m,l
ECB with additional polyester fleece backing	RE 820 210 F	KÖSTER ECB 2.0 F - 2.10 m	2,0 mm	2,10 m	m,l, b
	RE 820 150 F	KÖSTER ECB 2.0 F - 1.05 m	2,0 mm	1,50 m	m,l, b
	RE 820 105 F2S	KÖSTER ECB 2.0 F 2S - 1.05 m	2,0 mm	1,05 m	m,l, b, 2 S
	RE 820 052 F	KÖSTER ECB 2.0 F - 0.525 m	2,0 mm	0,525 m	m,l, b
Unreinforced, homogenous ECB	RE 820 105 U	KÖSTER ECB 2.5 U - 1.05 m	2,0 mm	1,05 m	u



## R - Roof (other)

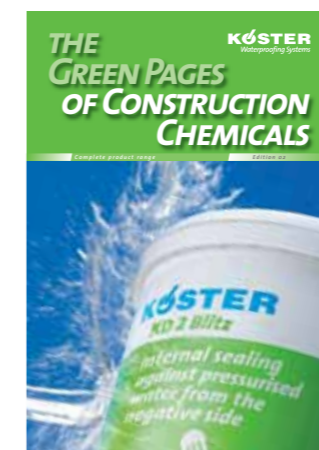
Main products	W 210 020	KÖSTER 21	Multi-purpose, crack bridging, liquid applied waterproofing. White, UV stable and heat reflecting. Very good adhesion to dry and moist substrates. Applicable to various substrates.
	R 238 015	KÖSTER Elastic Roof	Elastic roof waterproofing. Liquid applied, crack bridging, UV resistant, white.
	R 260 020	KÖSTER Dachflex	Highly elastic 1-component coating for sloped roofs and facades
Membranes	R 817 105 AS	KÖSTER KSK Alu Strong	Cold applied, self-adhesive waterproofing membrane, mesh reinforced with top-side UV resistant aluminum foil for small roofs (1.7 mm x 1.05 mm x 10 m)



## X - Accessories

X 911 001	KÖSTER Drill Stirrer	For mixing 2-component thick film sealants (e.g. KÖSTER Deuxan 2C)
W 912 001	KÖSTER Brush for Liquids	Special brush for liquid materials (e. g. KÖSTER Dachflex, KÖSTER KD 3)
W 913 001	KÖSTER Brush for Slurries	Special brush for the application of waterproofing slurries
CT 914 001	KÖSTER Spiked Roller	For de-airing of floor coatings. Width: 80 cm.
CT 915 001	KÖSTER Screed Scraper	For the distribution of e. g. KÖSTER underlayments, height adjustable from 0-30 mm
IN 988 001	KÖSTER Resin Mixer	Special mixer for polyurethane and epoxy resins
X 991 001	KÖSTER Single Paddle Mixer	Electronic multi-purpose mixer for materials with low and high viscosity. 1300 Watt, 220 V.
X 992 001	KÖSTER Double Paddle Mixer	Electronic compulsory mixer, specially suitable for paste-like and highly viscous mortars, plasters, adhesives, bitumen, etc. 1400 Watt, 220 V
X 996 001	KÖSTER Disc Stirrer	For KÖSTER Single Paddle Mixer. Suitable for self-leveling screeds, sealing slurries, injection mortars, etc.
X 997 001	KÖSTER Mortar Stirrer	For KÖSTER Single Paddle Mixer. Suitable for mixing thick an paste-like materials, restoration plasters, adhesives, mortars, tile adhesives, etc.
X 998 001	KÖSTER Mortar Stirrer Set	For KÖSTER Double Paddle Mixer. Consists of one right-handed and one left-handed mortar stirrer.
W 911 001	KÖSTER Rubber Hand Roller	For the secure application of KÖSTER KSK Membranes
M 999 001	KÖSTER Protimeter	For evaluating surface moisture of mineral substrates
X 919 001	KÖSTER Diagnosis Case	For a quick diagnosis of construction materials on site (salt and pH analysis)

Please find more detailed information in our technical literature:



[www.koster.eu](http://www.koster.eu)



*Service you can depend on*

*With our service and distribution network in many countries world-wide we can offer you professional advice and technical support immediately and on the spot. Your required waterproofing materials can be delivered promptly and will protect your property efficiently and lastingly.*

*For further information, please contact:*

**KÖSTER**  
Waterproofing Systems



DEUTSCHE  
BAUCHEMIE



KÖSTER BAUCHEMIE AG | Dieselstraße 1–10 | D-26607 Aurich | Germany  
Phone: +49 (4941) 9709-0 | Fax: +49 (4941) 9709-40 | [info@koster.eu](mailto:info@koster.eu) | [www.koster.eu](http://www.koster.eu)